

The Etango Project The proposed uranium mine

BACKGROUND INFORMATION DOCUMENT for the Amendment to the Environmental and Social Impact Assessment and Environmental and Social Management Plan of 2009

Introduction

Bannerman Mining Resources (Namibia) (Pty) Ltd received Environmental Clearance in March 2010 for its plans to establish 'The Etango Project' that lies 41km east of Swakopmund and 47km northeast of Walvis Bay. Environmental Clearance was based on the Environmental and Social Impact Assessment and Management Plan which were developed by A. Speiser Environmental Consultants cc (ASEC) with a team of 14 specialists between October 2007 and December 2009.

Bannerman plans to submit an amendment to the ESIA and ESMP to the Ministry of Environment and Tourism which takes into account the mine's revised plans and new studies.



Figure 1. Location of the Etango Project

Main changes to the mine's plans

- Life of Mine increased to more than 20 years
- Northwards expansion of Anomaly A pit incorporating Oshiveli & Onkelo deposits to a point 1.5km from the Swakop river
- Waste rock dumps to be expanded
- Expanded Heap leach residue facility; and
- Location of processing plant shifted 1.5km west

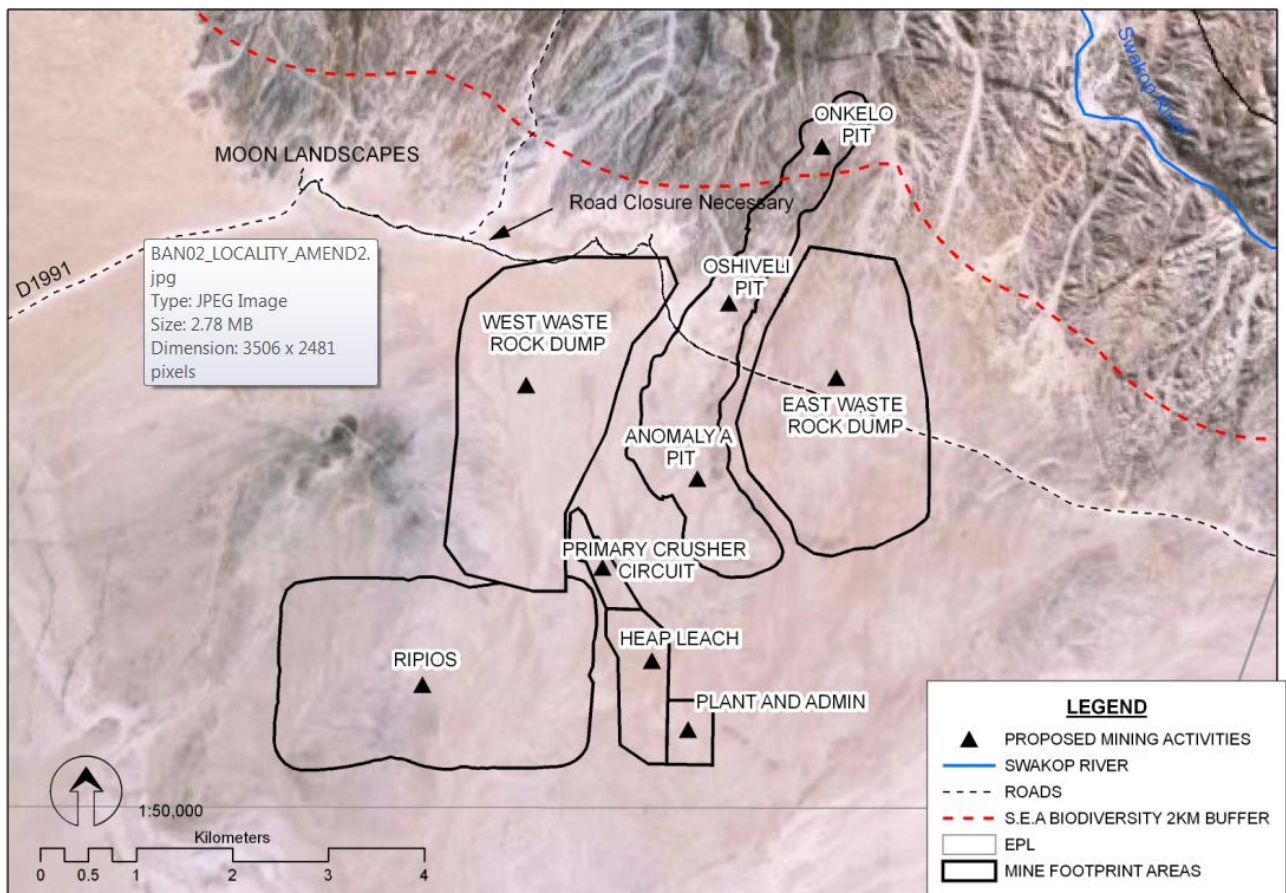


Figure 1. Amended site plan.

Additional ESIA studies have been conducted during 2010

- Linear infrastructure / access to mine (see the separate Background Information Document)
- Radiation Management Plan and updated Radiation Model;
- Public Consultation and Disclosure Plan; and
- Fauna & Flora studies expanded to assess potential impacts of new pit area
- The following impact studies were reviewed and updated:
 - Air Quality Study and the model is now based on weather (November 2007 to June 2010) and dust and PM10 (March 2009 to August 2010) data
 - Bio-diversity
 - Socio-economic
 - Archaeology
 - Visual
 - Noise
- The development of a Groundwater Model and assessment is not yet finalised and will be available by the time of the public meetings.

All studies aligned the environmental impact assessment methodology to that used by the Linear Infrastructure EIA. They also aligned their mitigations with the recommendations of the Strategic Environmental Assessment for the central Namib Uranium Rush (SAIEA 2010).

Key conclusions from the additional/updated ESIA studies

- The mitigation strategies adopted have reduced the impact of the amended mine layout and design, and do not significantly change the impact assessments from the original ESIA.
- No major changes are recommended to the Environmental and Social Management Plan.

More Information is available

- Background Information Document on the Linear Infrastructure on: www.erm.com/bannerman_etango and www.asecnam.com
- Strategic Environmental Assessment for the central Namib Uranium Rush is available on: www.saiea.com/uranium/index.html
- **Both Background Information Documents** are available at the following venues: Swakopmund library, Woermann House and the Ministry of Mines and Energy library, Aviation Road, Windhoek.

We welcome comments from Stakeholders

The draft amended ESIA and ESMP and draft EIA for the Linear Infrastructure will be ready for scrutiny in mid March. Meanwhile, we want to draw your attention to the main changes and implications at the public meetings to be held on:

<p>Windhoek: Wednesday 23rd February 2011 at 17.30 at the Ministry of Mines and Energy Auditorium, Aviation Rd.</p> <p>Swakopmund: Thursday 24th February at 17.30 at the Namib Primary School, Sam Nujoma Dr.</p>
--

Please send all comments to: A. Ashby: aapl@web.com.na or SMS to 081 650 5071. The public consultation period runs until 10th March 2011. All comments will be recorded and addressed in the final ESIA and ESMP.